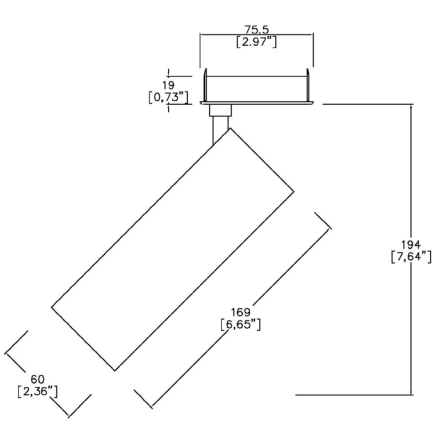


TubeLED Mini Quantum HE

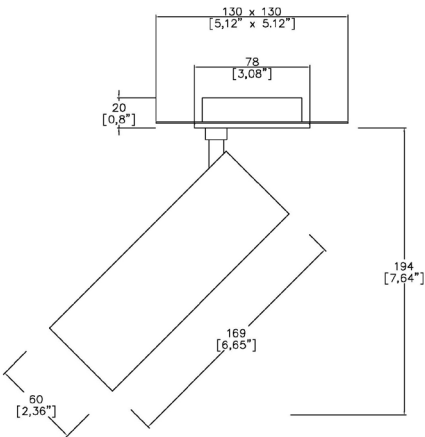
TM65.2	10kgCO2e
TM66	2.5 CEAM



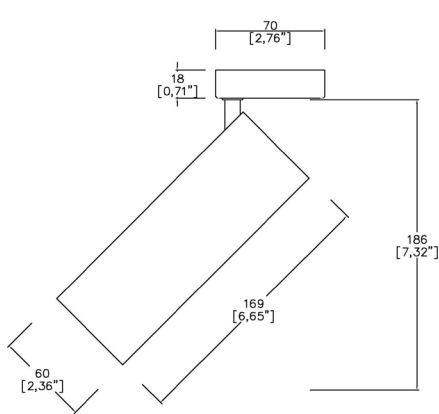
60mm (2.36”) overall diameter. Monopoint mounting.  
TubeLED Spotlight for use on monopoints with integral driver. Family of matching products also available.



TL6030/Q-HE-RMP  
Cut out Ø71mm



TL6030/Q-HE-TMP  
Cut out Ø68mm



TL6030/Q-HE-SMP  
Cut out Ø15mm

LED Source	Q-HE	Q-HE	Q-HE	Q-HE
CCT	3000K	3000K	3000K	3000K
Drive Current^	200mA	200mA	200mA	200mA
Power inc Driver	8W	8W	8W	8W
Beam Angle	NF(17°)	MF(24°)	FL(31°)	WFL(48°)
Delivered Lumens	1112	1168	987	966
Delivered Intensisty cd	8724	7181	3325	1616
Efficacy lm/w	139	146	123	121
Forward Volt	34V	34V	34V	34V
CRI	≥90 CRI	≥90 CRI	≥90 CRI	≥90 CRI

L1  
≥75 Dwellings  
Compliant

L2  
≥95 General  
Compliant

L2  
≥80 Display  
Compliant

Apply these factors to 3000K for lumen output of other CCTs: 2700K x 0.98 / 4000K x 1.02.

Project Ref: \_\_\_\_\_ Location Ref: \_\_\_\_\_

Fixture Order Code: **TL6030/Q-HE** -  -  -  -  -  -  -  - **0200**

Fixture	TL6030/Q-HE	TubeLED Mini QUANTUM HE
CCT	27	2700K
	30	3000K
	40	4000K (I)
(I) contact Lucent for availability		
Beam	NF	Narrow Flood
	MF	Medium Flood
	FL	Flood
	WFL	Wide Flood
Protocol	S	Non-Dim (Integral)
	P	Phase (Integral)
	A	Analogue (0-10v) (Integral)
	D	DALI (Integral)
Colour Insert	(Blank)	Standard Black RAL 9005 to be supplied
	SNK1	Satin Nickel
	SGD1	Satin Gold
	PCP1	Polished Copper
	PGD1	Polished Gold
Finish	WH03	White RAL 9016
	BK01	Black RAL 9005
	RAL*	Custom RAL Colour*
	ABR1	Antique Brass
	ABZ1	Antique Bronze
Fixing	RMP	Recessed Monopoint
	TMP	Trimless Monopoint
	SMP	Surface Monopoint
Drive Current	0200	200mA

Finish selection



Antique Brass

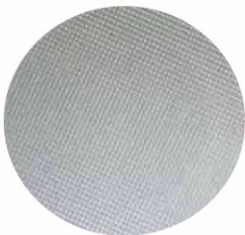


Antique Bronze

Accessories



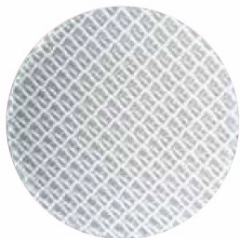
Honeycomb Louvre



Diffusing Lens



Frosted Lens



Heavy Spread Lens



Linear Spread Lens

Accessories Order Code:

- Louvre/Lens (2)
- LL45 Honeycomb Louvre
  - LLDF Diffusing Lens
  - LLFR Frosted Lens
  - LLLS Linear Spread Lens
  - LLHS Heavy Spread Lens

(2) Max 2 accessories can be used

Technical Details

\*Custom RAL code must be specified. Custom RAL colours can increase prices and lead times

Dimming. Whilst Lucent can offer the majority of its luminaires with various dimming options, it remains the responsibility of the specifier/installer to check and ensure compatibility of any control equipment used. Additional cabling may be required depending on the dimming protocol specified.

^ Depth indicated is the minimum recess depth for the luminaire with a remote mounted LED driver. Installing a driver through either the luminaire cut-out or installation kit may require additional recess depth, please refer to the relevant luminaire installation instructions for further details.Data correct at time of publishing

First Fix Requirement. Luminaire comprised of fixture body with ceiling trim and installation kit, which is to be fitted into the ceiling once finished. Ensure correct alignment of the installation kit before final assembly (see luminaire instllation instructions for details)

IP Rating. Tested from underside of the ceiling

Note that the picture of the finishes provided is for illustrative purposes only. The finishes may vary in colour, texture and appearance. Contact Lucent lighting Ltd for more information.

It is the policy of Lucent Lighting to continually review and improve its products and therefore reserve the right to change any details of product or withdraw specifications without prior notice.

Luminaires designed to comply with EN60598 and all other standards.

This specification sheet superseded all previous versions.

All intellectual property rights pertaining to the product described above and to this document are owned by or licensed to Lucent Lighting Ltd.

We reserve the right to take whatever action is necessary to protect those intellectual property rights.

Please notify Lucent Lighting Ltd of any inaccuracies immediately. E&OE